

# TREKKER PRO 2.0

Art. No. 602017



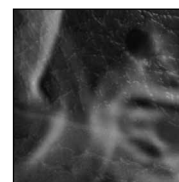
## CE EN ISO 20345:2011 S3 HRO HI CI WR SRC

Leather thickness 2.5 – 2.7 mm, waterproof and breathable with GORE-TEX® Performance, leg height 17,5 cm, antistatic, sole 020

Available sizes UK 3½ – 12, Extra large sizes UK 13 / 14 / 15



HAIX® Vario Wide Fit System



HAIX® Climate System



RTC with countersunk seams



### Upper Material

Waterproof leather, hydrophobic, breathable (5,0 mg/cm²/h), 2.5 – 2.7 mm thick

### Inner lining

GORE-TEX® Performance; waterproof and breathable. Highly abrasion-resistant lining with fleece midlayer. Optimized-climate comfort for all year seasons and excessive use. Increased chemical protection.

### Plastic Insole

Dimensionally stable, torsion-proof, avoids punctual pressure (e.g. of stones).

### Foot bed

Anatomically formed, exchangeable, washable, very good moisture absorption, dries quickly.

### HAIX® Protective steel toe cap

Anatomically formed protective steel toe cap meets the highest safety requirements.

### Protective Throughsole

Flexible, lightweight and puncture resistant metal midsole.

### Sole

Rubber/PU walking sole with proven street/terrain tread, wear resistant and non-slip traction; large, bevelled contact surface and superior bending comfort. Excellent cold/heat insulation, fuel resistant and non-marking characteristics. Compliant with EN ISO 20345:2011.

### HAIX® Climate System

The HAIX Climate system uses the pumping movement, which permits air circulation with every step – warm air is released and fresh air comes in through the vent holes at the top of the boot.

### HAIX® Vario Wide Fit System

The width of the boot can be individually adjusted by 3 different insoles. The boot is supplied with a red insole (medium). A yellow insole (wide) and blue insole (narrow) can be ordered separately.

### Sun Reflect

Reduces the heating effect of the upper leather by direct sunlight. Sunlight is reflected by the leather, keeping the leather and the feet cooler.

### HAIX® CO System

Pressure relief, cushioning, correction of foot position, correct posture and muscular balance.

### Others

Integrated heel bend, lacing system with eyelets permitting smooth movement, clamps, rubber toe cap, pulling strap

UK	3	3½	4	4½	5	5½	6	6½	7	7½	8	8½	9	9½	10	10½	11	11½	12	12½	13	13½	14	14½	15
EU	35	36	37	37	38	39	39	40	41	41	42	43	43	44	45	45	46	47	47	48	48	49	50	50	51
US	4	4½	5	5½	6	6½	7	7½	8	8½	9	9½	10	10½	11	11½	12	12½	13	13½	14	14½	15	15½	16

### HAIX®-Schuhe, Produktions- und Vertriebs GmbH

Auhofstrasse 10, 84048 Mainburg, Germany  
T. +49(0)8751/8625-0, F. +49(0)8751/8625-25  
info@haix.de, www.haix.com